

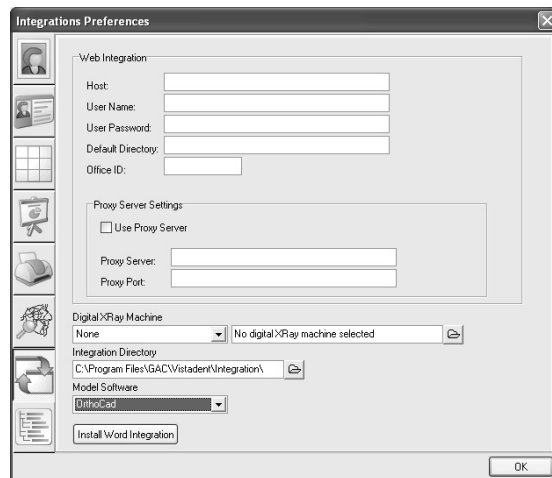
6.2. 3D Models

6.2.1. OrthoCAD

6.2.1.1. Settings in VistaDent

Select the 3D Model software In VistaDent

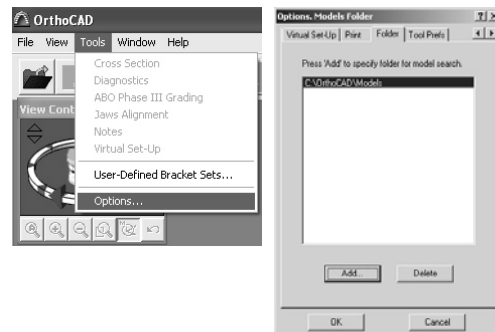
1. Open VistaDent and click on Options and then Preferences.
2. Click on the Integrations tab.
3. From the 3D Models pull down select OrthoCAD.
4. Close and restart VistaDent for this change to take effect.



6.2.1.2. Settings in OrthoCAD

Open OrthoCAD, and click on Tools, Options and then choose the right arrow button in the upper left. Click the Add button and then choose **C:\OrthoCAD\Models** as the location.

Be aware, for the integration to operate correctly, the model numbers and VistaDent Patient ID must be the same.



6.2.1.3. Viewing Models From VistaDent

To view models from VistaDent, open the patient and then click the OrthoCAD icon. This will launch the OrthoCAD software into the corresponding patient.

